

Photometric Report

ERA 800-CRI filter – Wide

MARTIN PROFESSIONAL R&D OPTICAL LABORATORY

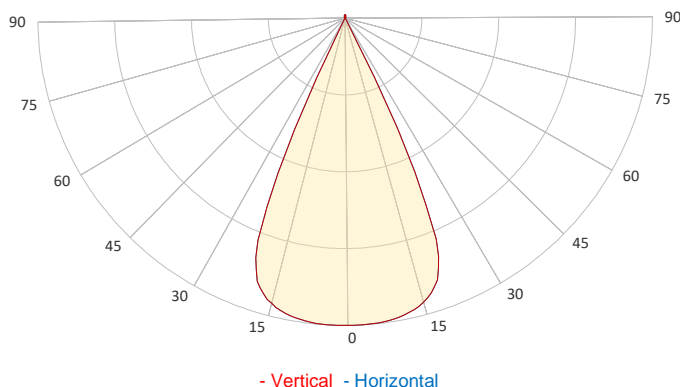
GENERAL SPECIFICATIONS

Total Fixture Output:	25000 lm
Light Engine Output:	70 klm
Efficacy:	22 lm/W
Lens Option:	N/A
Beam Angle (50%):	6-49°
Field Angle (10%):	°
Cut-off Angle (3%):	°
CRI:	79
CQS:	76
TM-30 Rf:	77
TM-30 Rg:	98
TLCI:	57
Color Temperature:	6500 K



SAMPLE MEASUREMENT

POLAR PLOT

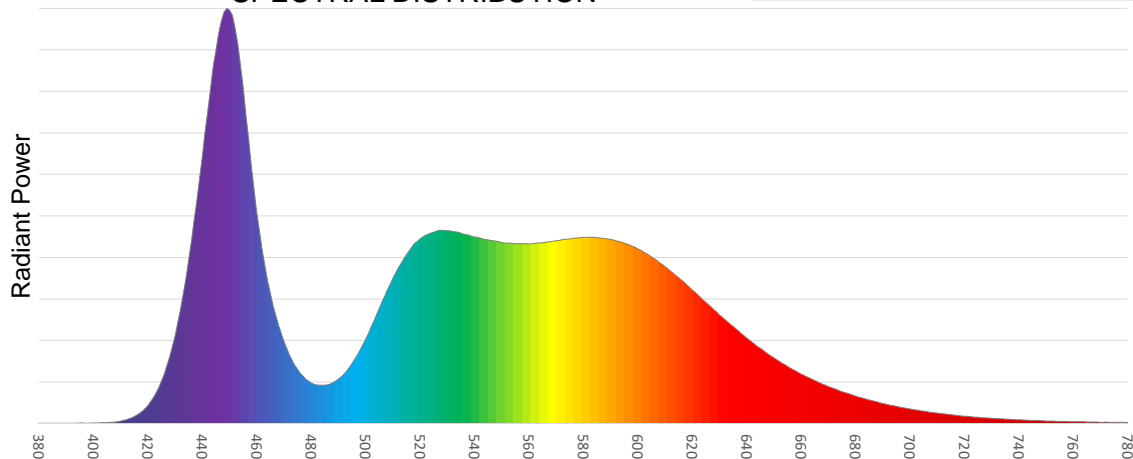


Catalog Number:	ERA 800 CRI Boost Filter
MAR -91614059	
Measured Output:	24459 lm
Measured Peak:	44299 cd
Consumed Power:	1161.5 W
Efficacy:	21.9 lm/W

Beam Angle (50%):	48.9°
Field Angle (10%):	53.3°
Cut-off Angle (3%):	54.1°

Measurement Condition:	
Ambient Temperature:	25° +/- 5° C
AC Supply:	230V/50Hz
Fan Mode:	
Fixture Warm-up Time:	60 minutes

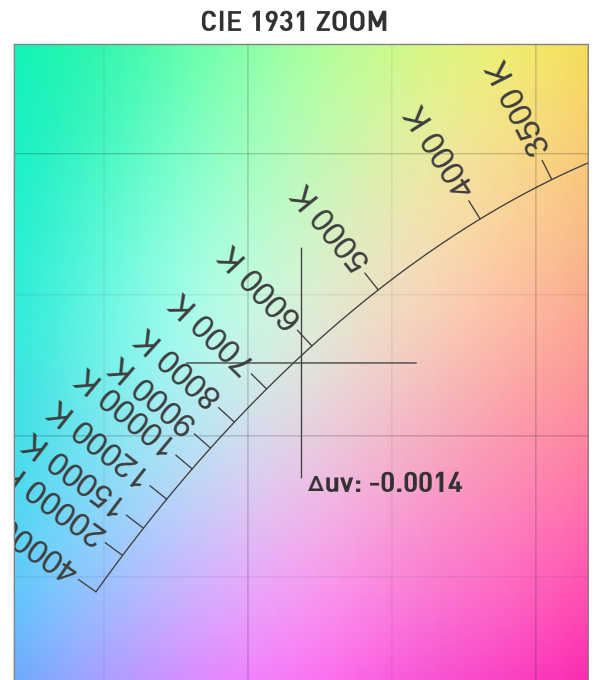
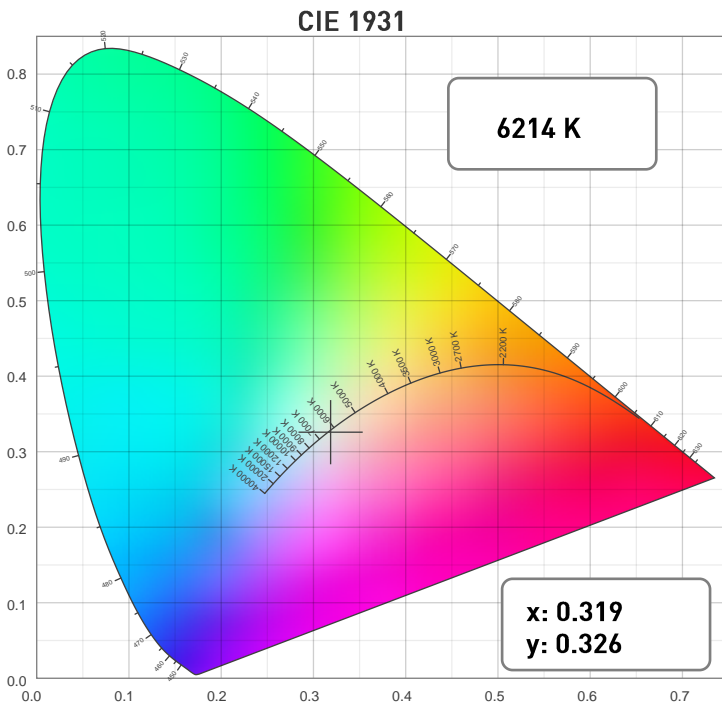
SPECTRAL DISTRIBUTION



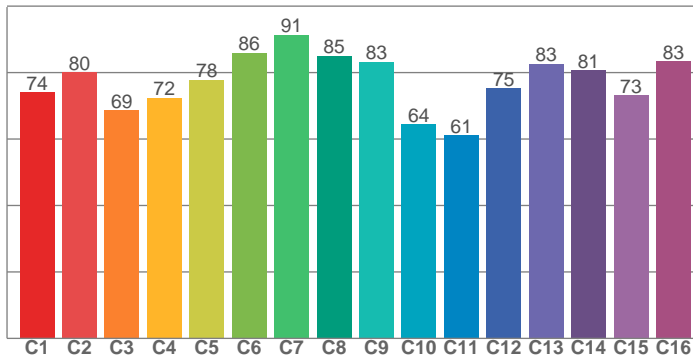
Photometric Report

ERA 800-CRI filter – Wide

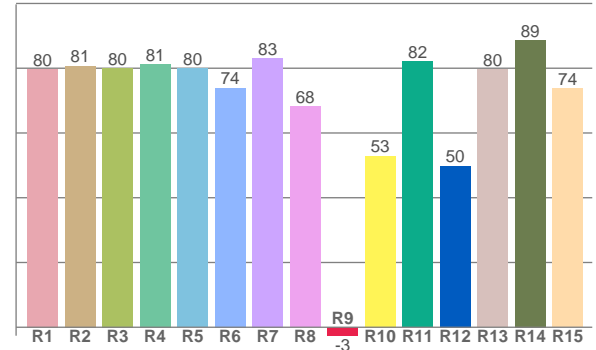
CHROMATICITY



TM30: 76.8



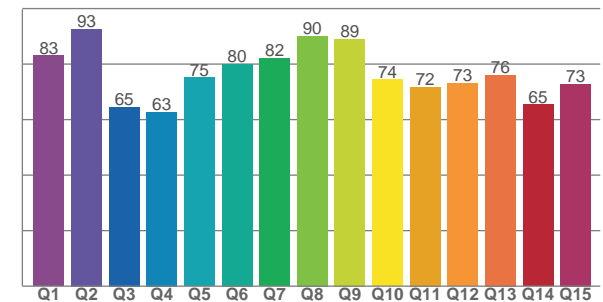
CRI: 78.4 (R1-R8)



COLOR PARAMETERS

Color Temperature	Color Rendering Index	Red Component	Color Fidelity	Color Gamut
CCT	CRI	CRI R9	TM30 Rf	TM30 Rg
6214 K	78.4	-2.6	76.8	98.0

CQS: 75.2



Television Lighting Consistency Index	Color Quality Scale	Color Coordinate CIE 1931	Color Coordinate CIE 1931	Color Coordinate CIE 1964	Color Coordinate CIE 1964	Color Deviation from Black Body
TLCI	CQS	x	y	u	v	Δuv
57	75.2	0.319	0.326	0.203	0.312	-0.0014

ERA 800-CRI filter – Wide

TM30

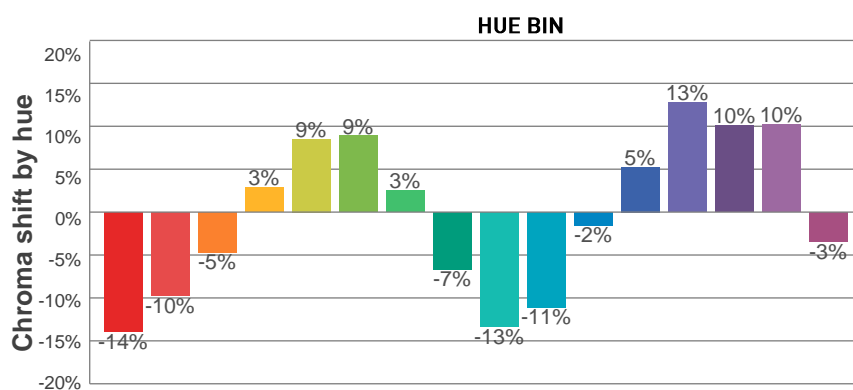
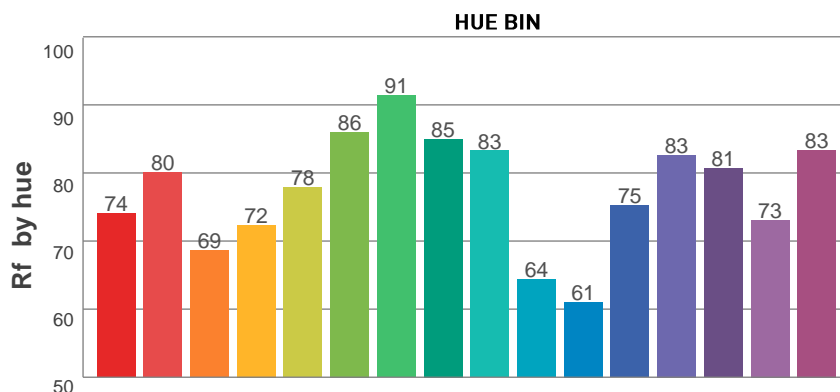
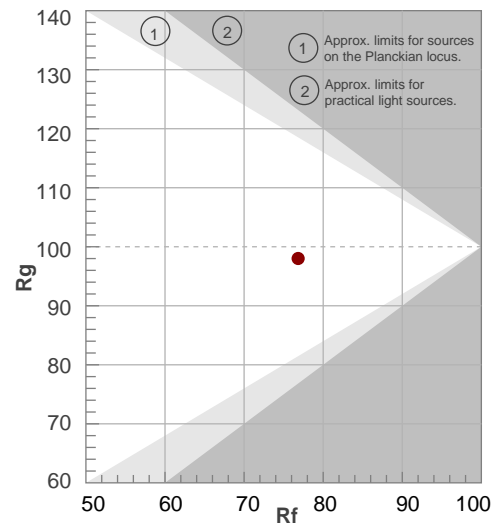
Rf 76.8

Fidelity index Rf

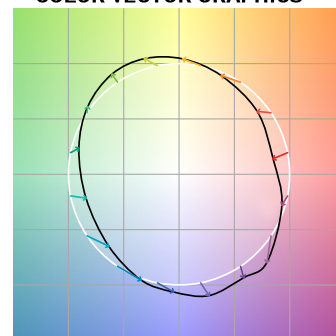
Rg 98.0

Gamut index Rg

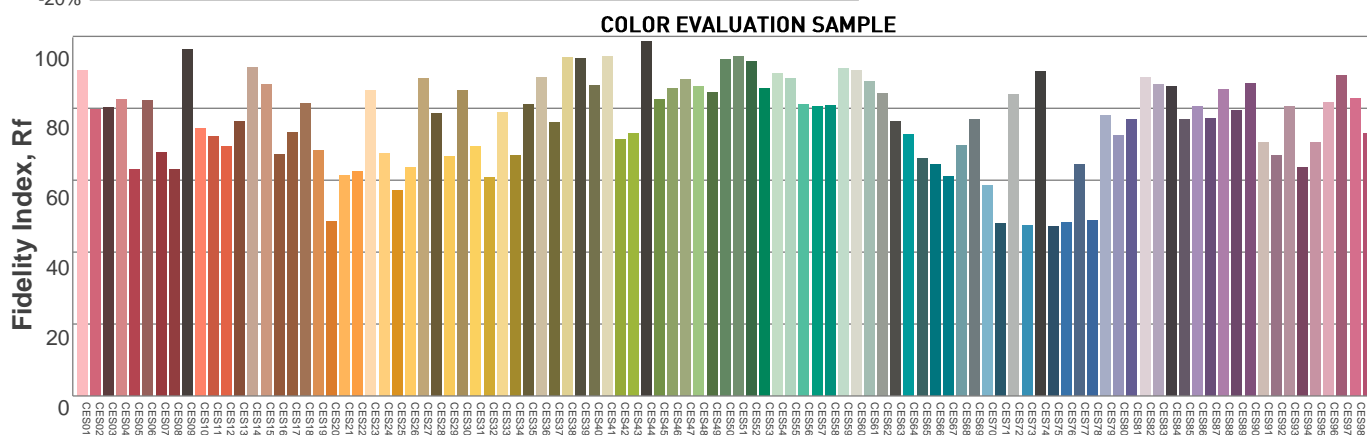
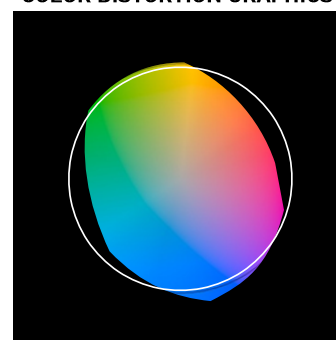
		Graphic shifts (%)	
Hue Bin	R_f	Chroma	Hue
1	74	-14%	-3%
2	80	-10%	8%
3	69	-5%	18%
4	72	3%	17%
5	78	9%	10%
6	86	9%	0%
7	91	3%	-5%
8	85	-7%	-5%
9	83	-13%	5%
10	64	-11%	19%
11	61	-2%	25%
12	75	5%	16%
13	83	13%	5%
14	81	10%	-3%
15	73	10%	-22%
16	83	-3%	-9%



COLOR VECTOR GRAPHICS



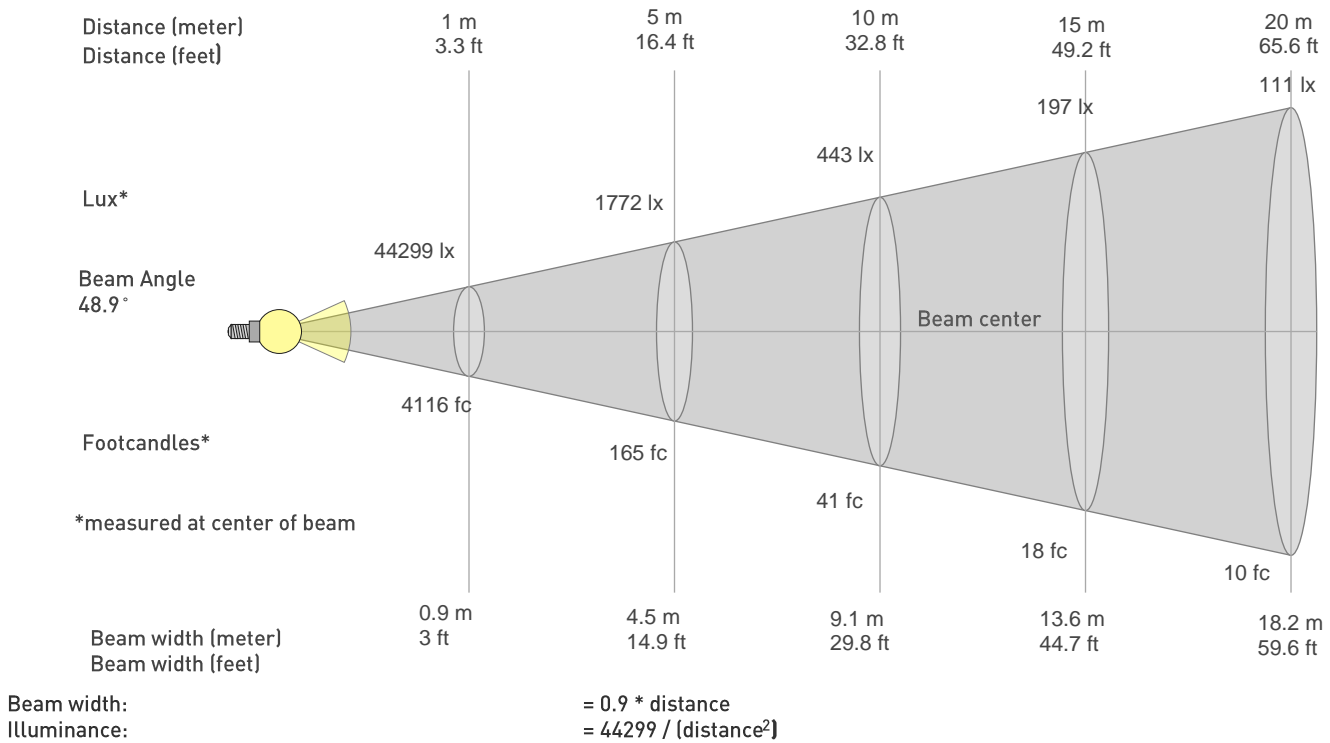
COLOR DISTORTION GRAPHICS



Photometric Report

ERA 800-CRI filter – Wide

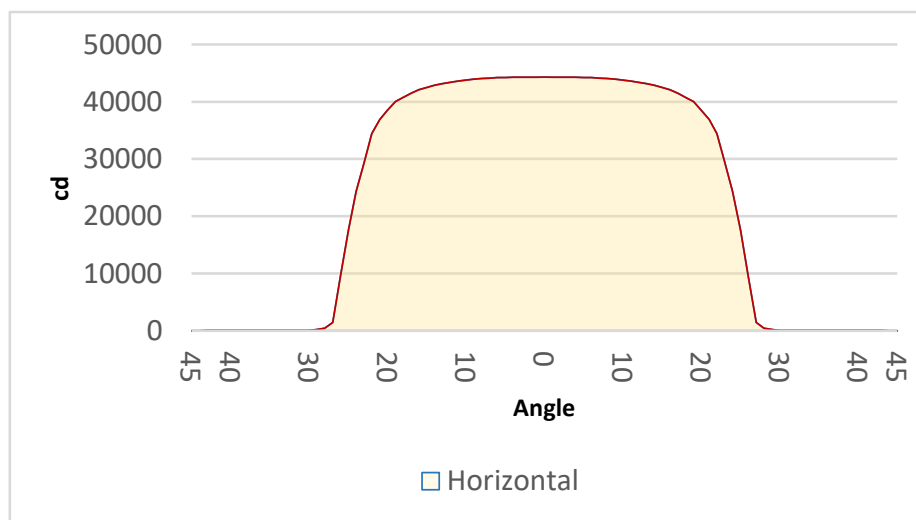
BEAM DETAILS



distance in [m] for illuminance in [lux] distance in [ft] for illuminance in [fc]

BEAM ILLUMINANCE FROM 1-20M

1m	2m	3m	4m	5m	6m	7m	8m	9m	10m	11m	12m	13m	14m	15m	16m	17m	18m	19m	20m
3.3ft	6.6ft	9.8ft	13.1ft	16.4ft	19.7ft	23ft	26.2ft	29.5ft	32.8ft	36.1ft	39.4ft	42.7ft	45.9ft	49.2ft	52.5ft	55.8ft	59.1ft	62.3ft	65.6ft
44299lx	11075lx	4922lx	2769lx	1772lx	1231lx	904lx	692lx	547lx	443lx	366lx	308lx	262lx	226lx	197lx	173lx	153lx	137lx	123lx	111lx
4115.5fc	1028.9fc	457.3fc	257.2fc	164.6fc	114.3fc	84fc	64.3fc	50.8fc	41.2fc	34fc	28.6fc	24.4fc	21fc	18.3fc	16.1fc	14.2fc	12.7fc	11.4fc	10.3fc



BEAM ANGLE 50%	FIELD ANGLE 10%	CUTOFF ANGLE 3%
48.9°	53.3°	54.1°